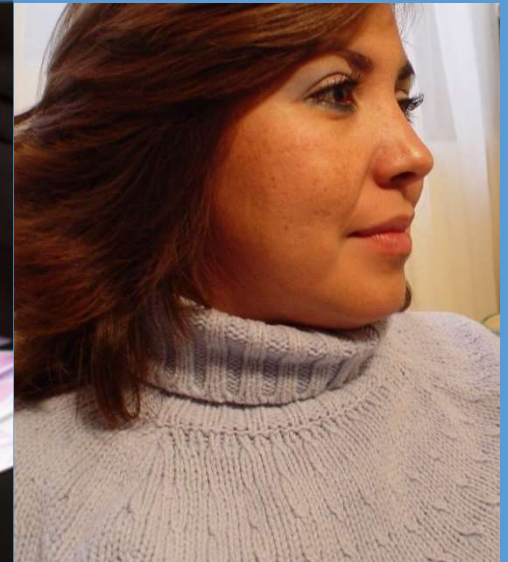




Pathways Community HUB

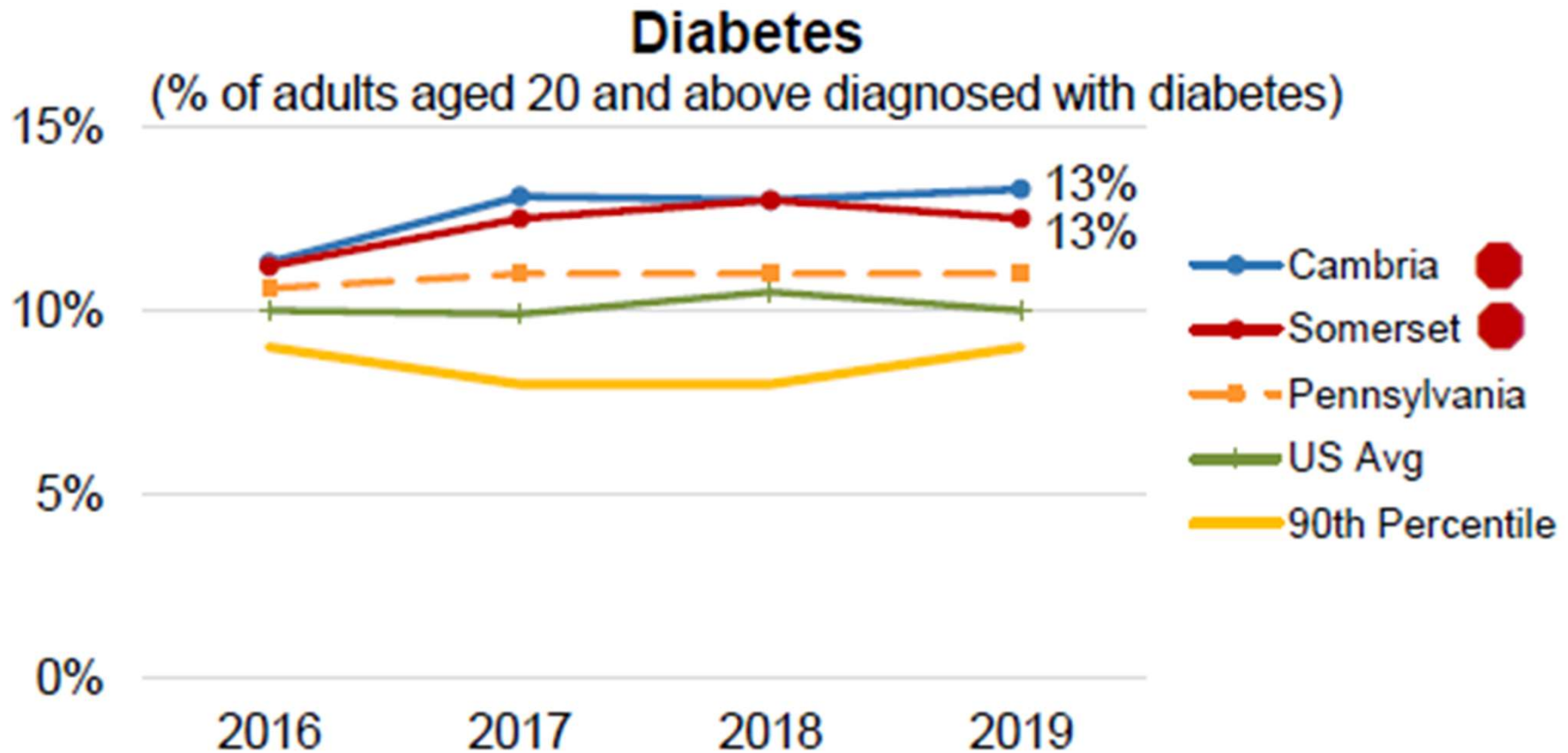
Pathways Community HUB Model



Pathways Community HUB

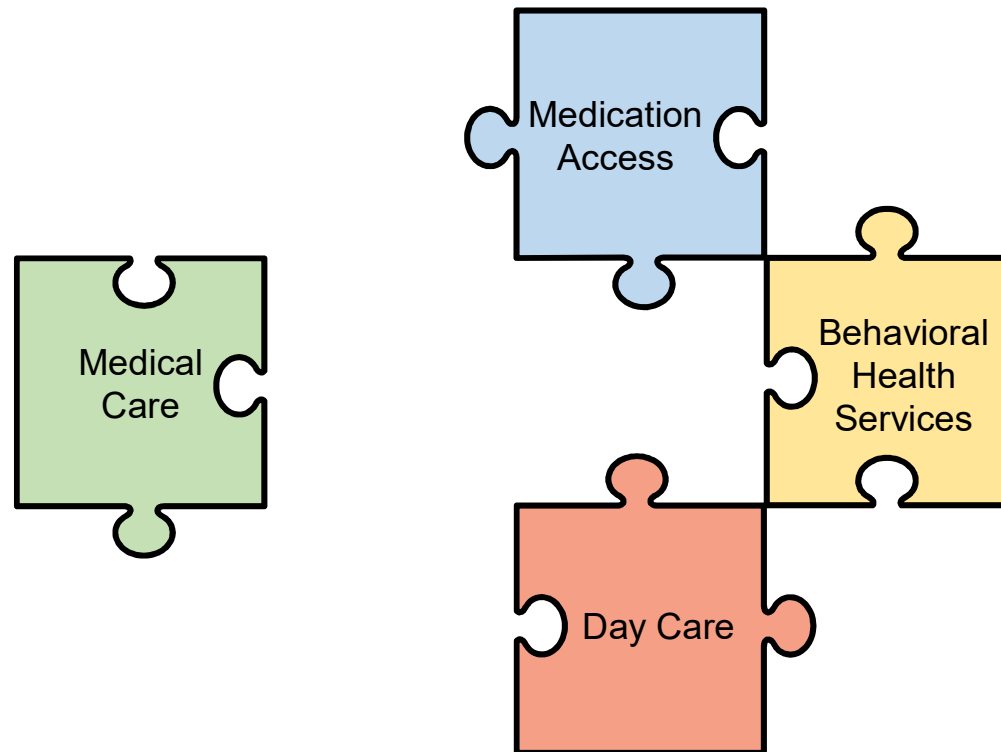
A Pathways Community HUB is an organized, outcome focused, **pay for performance** network of **community-based organizations** that hire and train **community health workers (CHWs)** to reach out to those at **greatest risk**, **identify their risk factors** and assure that they **connect** to medical, social, and behavioral health services.

Community Health Data

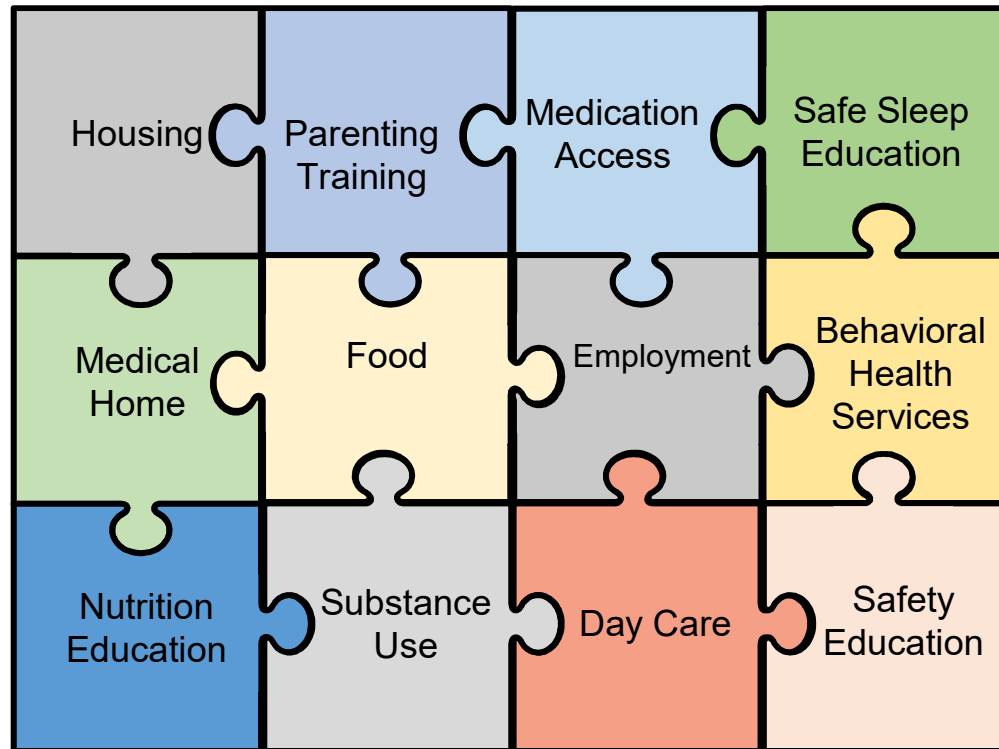


*Robert Wood Johnson – County Health Rankings data

Fragmented Approach



Whole Person Care



Community Health Workers



Key to the Pathways Community HUB model are community health workers (CHWs), who provide in-home care coordination services and are employed by community-based organizations.

Relationships!



21 Core Pathways

- Adult Learning
- Developmental Referral
- Employment
- Family Planning
- Food Security
- Health Coverage
- Housing
- Immunization Referral
- Learning
- Medical Home
- Medical Referral
- Medication Adherence
- Medication Reconciliation
- Medication Screening
- Mental Health
- Oral Health
- Postpartum
- Pregnancy
- Social Service Referral
- Substance Use
- Transportation

Contracts based on OBUs – Value-Based Payments

Example: If one Outcome-Based Unit (OBU) = \$20

High Risk:

Initial Adult Checklist = \$140

Health Insurance = \$100

Employment = \$140

Very High Risk:

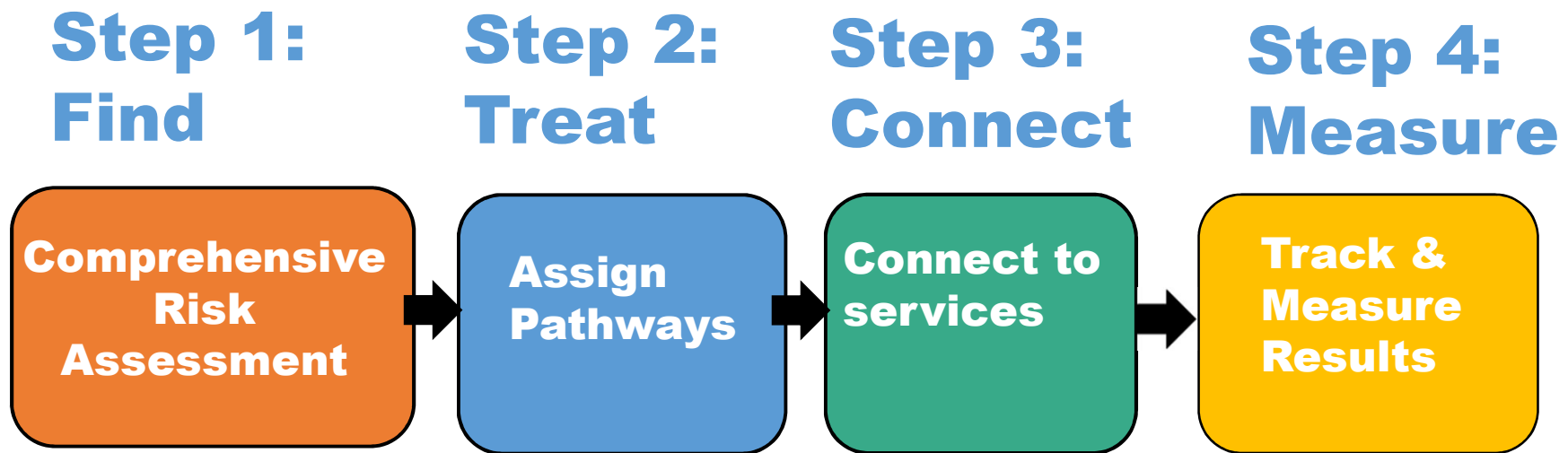
Initial Adult Checklist = \$180

Health Insurance = \$120

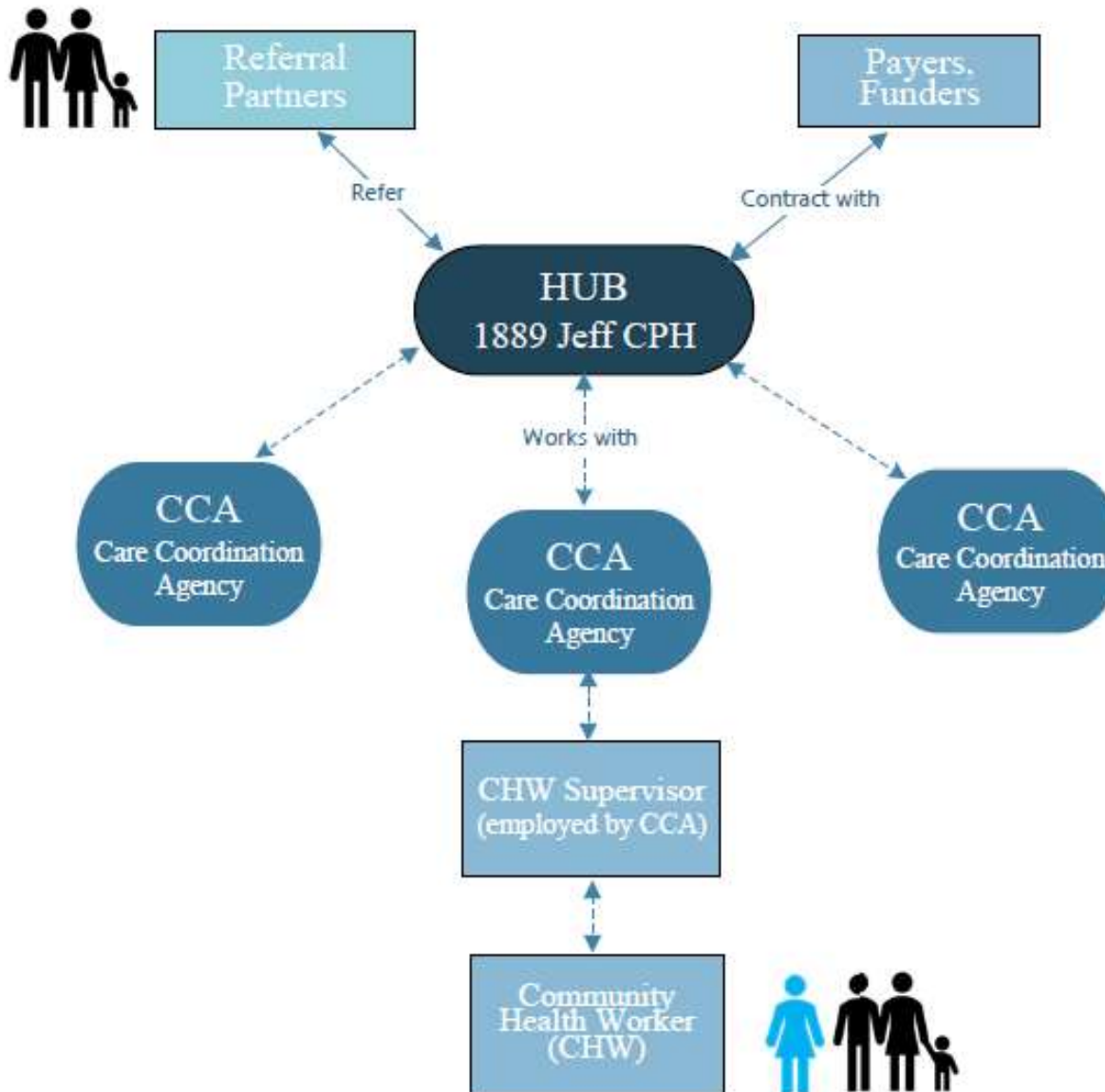
Employment = \$160

Adult Member:						
		High Risk	OBU	Very High Risk	OBU	Modifier
Checklists						
Initial Adult Checklist	Completed one time at enrollment	G9001	7	G9003	9	A1
Adult Checklist	Completed at each face-to-face encounter	G9005	1	G9010	1.5	A1
Pathways						
Adult Learning	Confirm that client successfully completes stated education goal	G9002	6	G9009	7	AA
Behavioral Health	Kept three scheduled behavioral health appointments	G9002	4	G9009	5	AB
Education	All required education components are completed and documented	G9002	1	G9009	1	AE
Employment	Consistent source of steady income and is employed more than 30 days from date of hire	G9002	7	G9009	8	AF
Family Planning	Tubal ligation, vasectomy, IUD, implant, shot or other form of long-acting reversible contraceptive (LARC) is obtained	G9002	5	G9009	6	G1
Family Planning	Method other than a permanent method or LARC chosen & client has successfully used the method for more than 30 days from the start date	G9002	4	G9009	5	G2
Health Insurance	Received health insurance – document plan and insurance number	G9002	5	G9009	6	AH

Foundation of the HUB Model



Proposed HUB Model



HUB Funding

Certified Pathways HUB Funding Model

The Pathways Model utilizes a risk based “**pay for performance**” funding model--Care Coordination agencies are paid based on positive outcomes achieved.

The **1889 Foundation** has provided initial funding for the pilot implementation of the HUB at the 1889 Jefferson Center for Population Health.

Medicaid Managed Care and other payers provide payments for outcomes achieved with high risk members.

If no contract funds are available, **Grant funding** is sought to address social determinants, fund HUB operations, and provide payment outcomes to at-risk clients

HUB Priority Population

- Initial Priority Population:
 - Pregnant women in Cambria and Somerset counties diagnosed with Gestational Diabetes
 - 11.2% of deliveries were to mothers with gestational diabetes
 - Pregnant women receiving Medicaid benefits in zip codes 15901-15909.
 - 11.6% of deliveries were low birth weight.
 - The City of Johnstown had the highest rate of low birth weight newborns in Pennsylvania*
 - Babies born with low birth weight are at increased risk of developing chronic conditions, such as Type II Diabetes
- As CHW capacity is increased, Diabetes-focused population will be expanded



Status of Planning

HUB Outreach

- Meetings with 50+ community agencies, groups, and individuals – still more to go!
- Informational meetings held Nov 13th and 14th
- Meetings with state officials, legislators, and insurers
- Networking with other HUBs nationwide

HUB Community Leadership

HUB Core Team Members

- Travis Hutzell, United Way of Laurel Highlands
- Dr. Lynn Johnston, Conemaugh Family Medical Center
- Lois Schultz, Nurse Family Partnership
- Dr. Leah Spangler, The Learning Lamp
- Dr. Sarah Redding, PCHI
- Rick Wilk, PCHI

HUB Community Advisory Committee

- Community leaders who will advise HUB once launched

HUB Timeline

December 6, 2019

RFP announced

January 14, 2020

RFP applications due

January 31, 2020

CCAs selected

April, 2020

CHWs hired

April, 2020

CHW training begins

May, 2020

Tentative launch of HUB

Join the HUB Network

Care Coordination Agency - A Care Coordination Agency (CCA) partners with the HUB to employ Community Health Workers who work with HUB participants.

Applications due January 14, 2020.

Referral Partner – Connect with the HUB network as a referral partner so that you can make referrals for your clients or patients directly to the HUB.

Direct Service Provider – Connect with the HUB network as a direct service provider for HUB participants to be referred to your agency for services.



Questions?

Contact Info:

Jeannine McMillan, Executive Director
Pathways Community HUB

Jeannine.Mcmillan@jefferson.edu

814-535-5156

Leanna Bird, Project Manager

Leanna.Bird@jefferson.edu

814-535-5156

<https://www.1889jeffersoncenter.org/pathways-community-hub/>